




User guide

*DRIVE*₁₀

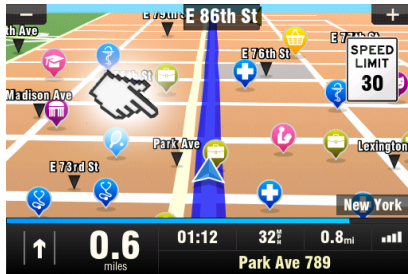
v3

© 2010 Sygic, a.s. All rights reserved.

I. Getting Started.....	1
The Navigation Screen	1
Entering an Address.....	2
Turn by Turn Navigation	4
Acquiring GPS Position	5
II. Planning the Route	7
Navigating to a Point of Interest.....	7
Navigating Home	9
Navigating to Recent Destinations	9
Navigating to Favorite Destinations	10
III. Altering the Route	12
Route Menu	12
Modifying the Route.....	14
Map Browsing Mode	14
Multi-stop route planning	17
IV. Settings.....	19
 Advanced settings.....	21

I. Getting Started

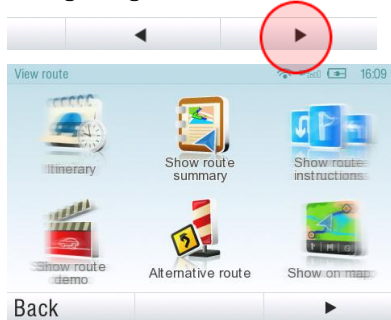
The Navigation Screen



On startup, the application opens with the Navigation Screen, showing your position as a blue arrow. You can zoom in and out of the map by tapping the + and – buttons in the top corners of the screen.

For further functions, enter the **Main menu** by tapping the map area on the Navigation Screen.

You can scroll between the menu pages by tapping the arrow buttons at the bottom of the screen or by sliding a finger across the screen.



Entering an Address

To set your destination by entering its address select

Main menu >



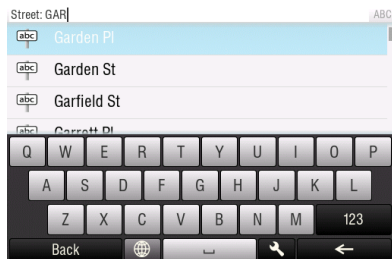
Navigate to... >



Address or Zip code.

Next, you will be asked to select a **Country** a **City**, **Street** and **House number** or **Street crossing**. Enter the required names and numbers.

Alternatively, just enter the first few letters of the city/street name to see a list of similar names.



The list also features explanatory icons left to the city/street name:



City



Capital city



City center



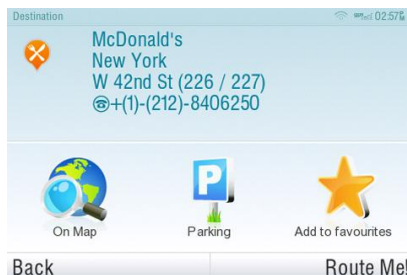
Street



Street crossing

Select the desired city/street from the list.

When finished, a Confirmation Screen pops up showing the address entered.



Tap **“On Map”** to see the exact location of the address, or tap **“Add**

to favorites” to store it among your frequently used destinations (see

Navigating to Favorite Destinations” on page 10).

To set the address shown as your destination, tap the **“Route Me!”** button at the bottom of the screen.

If you would rather be directed to a parking lot nearby, tap **“Parking”** and select from the list shown.

To select a different address altogether, tap the **“Back”** button.

If your device can determine your current position, your route will be calculated immediately from that position. If your current position cannot be determined, you will be offered the following options:



**Wait for valid signal
(Recommended)**

Your route will be calculated from your current position as soon as a valid GPS signal is available (see “Acquiring GPS Position” on page 5).



Last valid position

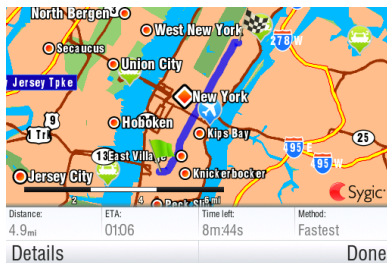
Your route will be calculated from your last known position (i.e. where you were just before the device lost GPS signal).



Select from map

Allows you to select any starting point for the route calculation.

When route calculation is complete, the entire route is displayed on the map (in blue) with total distance, estimated time of arrival (ETA), time left to destination and route calculation method (**Fastest**, **Economic**, **Shortest**, **Pedestrian**, **Bicycle**) shown below the map.



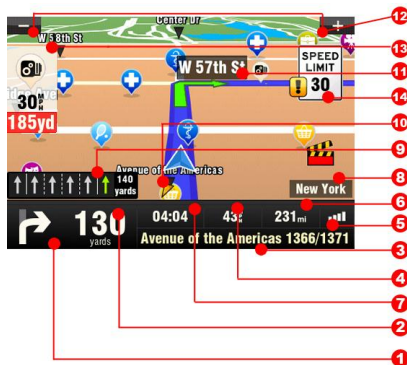
To accept the route and start turn by turn navigation, tap **“Done”**.

For further information on the route, tap **“Details”**.

NOTE: By default, the method of route calculation is set to “Fastest”.

Turn by Turn Navigation

The Navigation Screen will show the map of your surrounding area with the calculated route highlighted in blue.



As you approach a junction, further directions are displayed to indicate which road to take.

In addition to turn by turn directions, the Navigation Screen also provides a range of further useful information:

- 1 Next maneuver
- 2 Distance to next change of direction
- 3 Current road/street
- 4 Distance to destination
- 5 GPS signal strength
- 6 Current speed
- 7 Estimated time of arrival at destination
- 8 Current city
- 9 Lane Assistant
- 10 Heading to destination
- 11 Next road/street to take
- 12 Map zoom in/out
- 13 Speed camera warning
- 14 Current speed limit

Acquiring GPS Position

If there is no GPS signal, the screen becomes grey. This can happen under any of the following conditions:

- The device is in a tunnel or at a location where signals from the GPS satellites are obstructed by buildings, trees, electric cables or other objects.
- Device system settings or Product Settings are set incorrectly.



The information below is not available on iPhone, Android and Maemo devices.

The signal strength bars at the bottom of the screen provide additional information:

If the colour of the bars or the GPS port name/number turns red, re-check the GPS settings.

If the bars are grey, move the device to an outdoor location with good visibility of the sky until the signal is regained and the bars become green. Tap the signal bars or select

Main menu >



GPS

to see more detailed GPS information.

Once GPS signal is regained turn by turn navigation resumes automatically.

II. Planning the Route

Navigating to a Point of Interest

In addition to the road network, the map also stores the details of thousands of Points of Interest (POIs) such as gas stations, restaurants, hotels, tourist attractions and other facilities.

To set a POI as your destination, first select

Main menu >



Navigate to... >



Point of Interest

Next, define the area where you want to search for a POI. Select



Near my position

to search POIs around your current position;



Near address...

to search POIs near a particular address (to be entered in the next step);



Near destination

to search POIs near the current destination (if set);



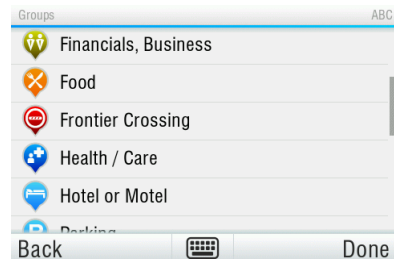
In City...

to search POIs in a particular city (to be entered in the next step);

Searching POIs

POIs are arranged in groups (such as Food, Hotel or Motel etc.) to help find a facility even when you do not know its name or address.

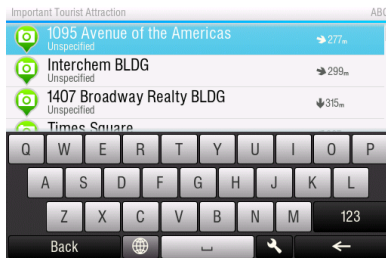
Once the search area is selected, a list of the POI groups is displayed.



Tap on the POI group and you will see the list of all POIs that are nearby.

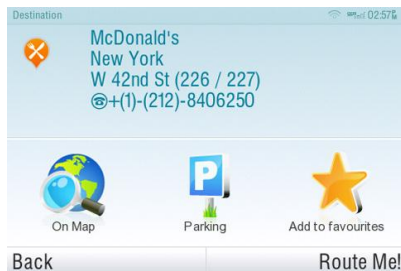
NOTE: The distances shown in the list are relative to the search location.

Scroll down the list and select your POI by tapping its name.



To refine your search results, tap the keyboard icon at the bottom of the screen and type the name of the POI you are looking for. You can also enter partial names.

When finished, a Confirmation Screen pops up showing the POI selected.



To set the selected POI as your destination, tap the “**Route Me!**” button.

Navigating Home

To start using this feature, you need to set your home location first. Select

Main menu >



Settings >



Set home location

and enter your home address.

Once your home address is stored, you can navigate home by simply selecting

Main menu >



Navigate to... >



Home

Navigating to Recent Destinations

Sygy Mobile Maps keeps track of your recent destinations, making it easy to return to a previously set location.

When entering an address through

Main menu >



Navigate to... >



Address or Zip code

the list of previously selected Countries/Cities/Streets appears, as you go through the address details.

They are marked with  icon.

You can directly go to a list of recent destination by selecting

Main menu>

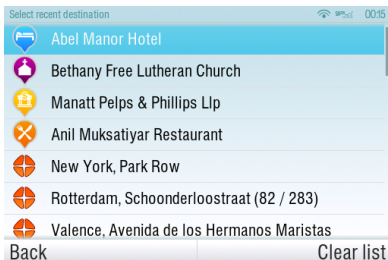


Navigate to... >



History

and start navigation by selecting a previous destination from the list shown.



Navigating to Favorite Destinations

To view a list of your Favorite destinations, select

Main menu >

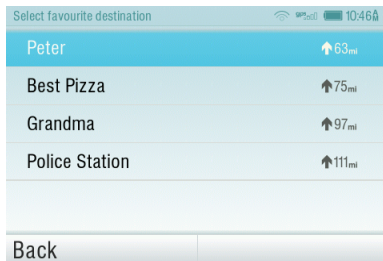


Navigate to... >



Favorite

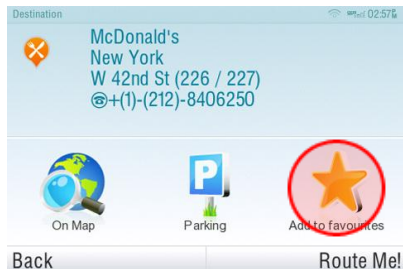
and start navigation by selecting a Favorite destination from the list shown.



Select the desired Favorite destination by tapping it and then select your next option from the Confirmation Screen.

Defining a new Favorite destination

To add a new address to your Favorites tap **"Add to favorites"** in the Confirmation Screen




or select

Main menu >



Map >

Select point on map >  >



Add as POI > Favorites

or select

Main menu >



Manage POI >  Add POI

III. Altering the Route

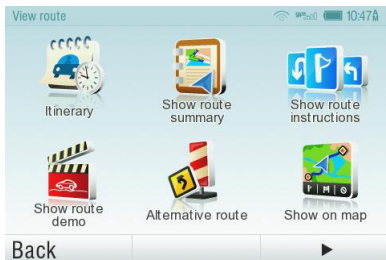
Route Menu

You can access detailed information about the calculated route from the Route menu. Select

Main menu >



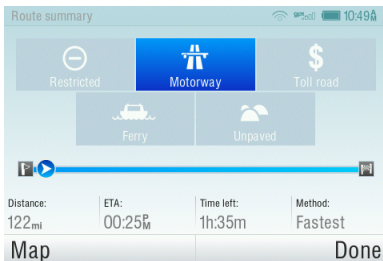
Route



To get a schematic overview of the route, select



**Show route summary >
Details**

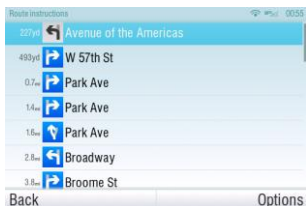


The icons highlighted in blue indicate specific types of roads included in the route.

To avoid a specific road type (e.g. Highways), tap the blue highlighted button.

To get a detailed list of junctions and directions along the route, select

Show route instructions



To see the same junctions as a series of images, select

Show route as images



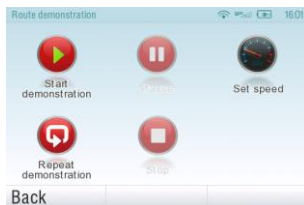
To see the entire route on the map, select

Show on map



To see the calculated route as if you were driving along (fly over mode) select

Show route demo



Modifying the Route

To modify an existing route, first open the Alternative route menu:

Main menu >



Route >



Alternative route

If you do not like the calculated route and wish to calculate an alternative option, select



Compute alternative

To calculate a detour (e.g. because the road ahead is closed), select



Avoid next...

If you wish to travel through a certain place on your trip, select



Travel via...

and add a waypoint the same way, as setting the destination in chapter “II. Planning the Route” on page 7.

If you want to cancel your modifications to the route, select



Reset to original.

If you wish to cancel the calculated route entirely, and use the navigation system only as an indicator of your current position, select

Main menu >



Route >



Cancel route

NOTE: You can find additional information about modification of calculated route in chapters “Map Browsing Mode” and “Multi-stop route planning”.

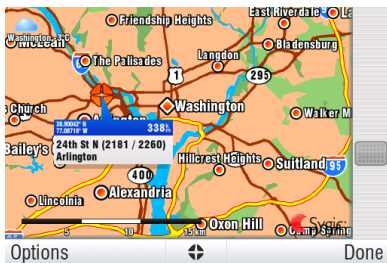
Map Browsing Mode

You can easily check and plan/modify your route in Map Browsing Mode. Select

Main menu >



Map



Drag the map by sliding your finger across the screen. Tap the map to select specific location.

For map display options and additional functions tap the “**Options**” button and select one of the following items.



Find...

You can find a position by using one of the options described in chapter II. Planning the Route.



Show current position



Show entire route




Show city

Shows entire city on map screen.



Show/Hide POIs...

You can select, which types of POI types are displayed when browsing the map.

To plan/modify your route, tap on a location on the map, then tap the button marked as “” to choose what you want to do with the selected point.



Navigate there

Sets the location as destination. The previously selected route will be deleted.



Travel via

Adds the location as a new waypoint to your existing route between start and finish.



Continue

Adds the location as a new waypoint after the existing destination.



Add as POI

Stores the location in **Favorites** or in other POI category.



Find nearby POI

Searches POIs around the location.



Avoid...

Recalculates the route avoiding a set radius around the location. You will be asked to set the radius in the next step.

Multi-stop route planning

If you have added some waypoints to your route via **Map** or **Alternative route**, you can edit them in **Itinerary**. It is also possible to optimize waypoints along the route, plan a new route or store it for future use.

To edit the current route, select

Main menu >

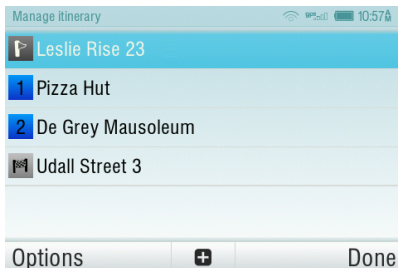




Route >




Itinerary

and select the **[Current route]** to see the list of waypoints.



The itinerary shows the starting point (marked with ) , the numbered waypoints and the final destination (marked with ). The waypoints that you have already passed are greyed out.

You can add a waypoint to the itinerary by taping the  button.

Waypoint options

Tapping on any waypoint in the itinerary brings up the following list of options:



Set as visited

Stops navigating to the selected waypoint and recalculates the route to the next waypoint in the itinerary.



Set as finish point

Puts the waypoint to the end and moves others upwards in the itinerary.



Set as via point

Changes the final destination to an intermediate waypoint.



Set as start

Stores the selected waypoint as the starting point of the route.



Add nearby POI

Use this option to search for a POI (e.g. a hotel) near the selected waypoint, and then

add it to the itinerary.



Move up

Moves the selected waypoint up in the itinerary.



Move down

Moves the selected waypoint down in the itinerary.



Delete

Deletes the selected waypoint from the itinerary.

Itinerary options

For additional itinerary functions tap the “Options” button at the bottom of the Itinerary Screen and select one of the following items.



Optimize itinerary

Optimizes the waypoint sequence in the itinerary.



Save itinerary

Saves the itinerary for future use.



Delete itinerary

Deletes the itinerary.

IV. Settings




IMPORTANT: Menu items marked with * are not available in all devices.

To change factory settings, select

Main menu



Settings

NOTE: Icons always display the setting that will be activated when they are tapped. E.g.  means that voice output and sounds are currently enabled, and tapping this button will disable the sounds.



Set 2D/3D

Change between 2D and 3D map view



Dynamic control

Set the preference how to scroll within lists and menus.



Set Day/Night colors



Disable sounds



Enable sounds



Volume settings *

Set the sound intensity separately for low driving speed and for high speeds.



Advanced settings

(for advanced users only)
For more information, see page 21.



Planning preferences

Set the routing algorithm:
Fastest, Economic, Shortest, Pedestrian, Bicycle.



Toll charge settings

Set the preference of paid road segments: avoid them,

do not avoid them, or always ask.



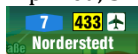
GPS hardware *

Detailed configuration of GPS and TMC hardware.

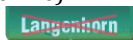


Signpost settings

Sets the number of signpost tables displayed at one time and the level of detail (Full, Simplified, Single line).



Preferred



Other




Rotate display *

Change the display orientation (landscape / portrait).



Keyboard settings

You can switch between preferred keyboard layouts using  button, that is available in every keyboard.



Regional settings

Set kilometers/miles, format of time and GPS coordinates.



Set language - language of user interface.



Set voice - language of voice instructions.



Switch map

Load a different map data from your device.



Set home location



About

Information about version, device code and available application memory. Please provide this information in communication with Sygic support.



Advanced settings

1 Avoid U-Turns



Enable lane assistant



Enable Autozoom

Warn if Railway crossing

2 Backlight settings

3 Configuration of Information panel on the main screen



4 Notification settings of maximum speed limit

Disclaimer

The information contained in this document is the property of Sygic a.s. and may be used only for the purposes of operating and supporting the relevant software created by Sygic a.s.

Sygic a.s. reserves all rights concerning the information contained herein. This document or any part thereof may not be reproduced, distributed, or translated into other languages in any way or form except with the written approval of Sygic a.s.

This document is provided to the user on an 'as is' basis. Although maximum care was taken during preparation of this manual to provide accurate information and to avoid errors, some technical inaccuracies or editorial errors may occur, for which Sygic a.s. accepts no responsibility.

In the interest of improving the content of the document, Sygic a.s. reserves the right to modify, amend or delete any part of the document at any time without prior notice.

For more information and updates, visit www.sygic.com